



# datagrid

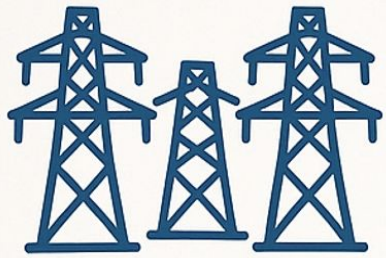
SUSTAINABLE DATACENTER PARK

GEOHERMAL WEEK PRESENTATION

Choose New Zealand



# KEY INFRASTRUCTURE REQUIREMENTS FOR HIGH-DENSITY AI DATACENTERS



## Robust Power Infrastructure

Reliable power generation and efficient energy transport are essential.



## Cooling Efficiency

Cool climate and ample water resources enable major cost savings.



## Global Network Integration

Access to high-capacity international connectivity is crucial.








## Physical & Cyber Security

A stable and secure environment protects critical infrastructure.

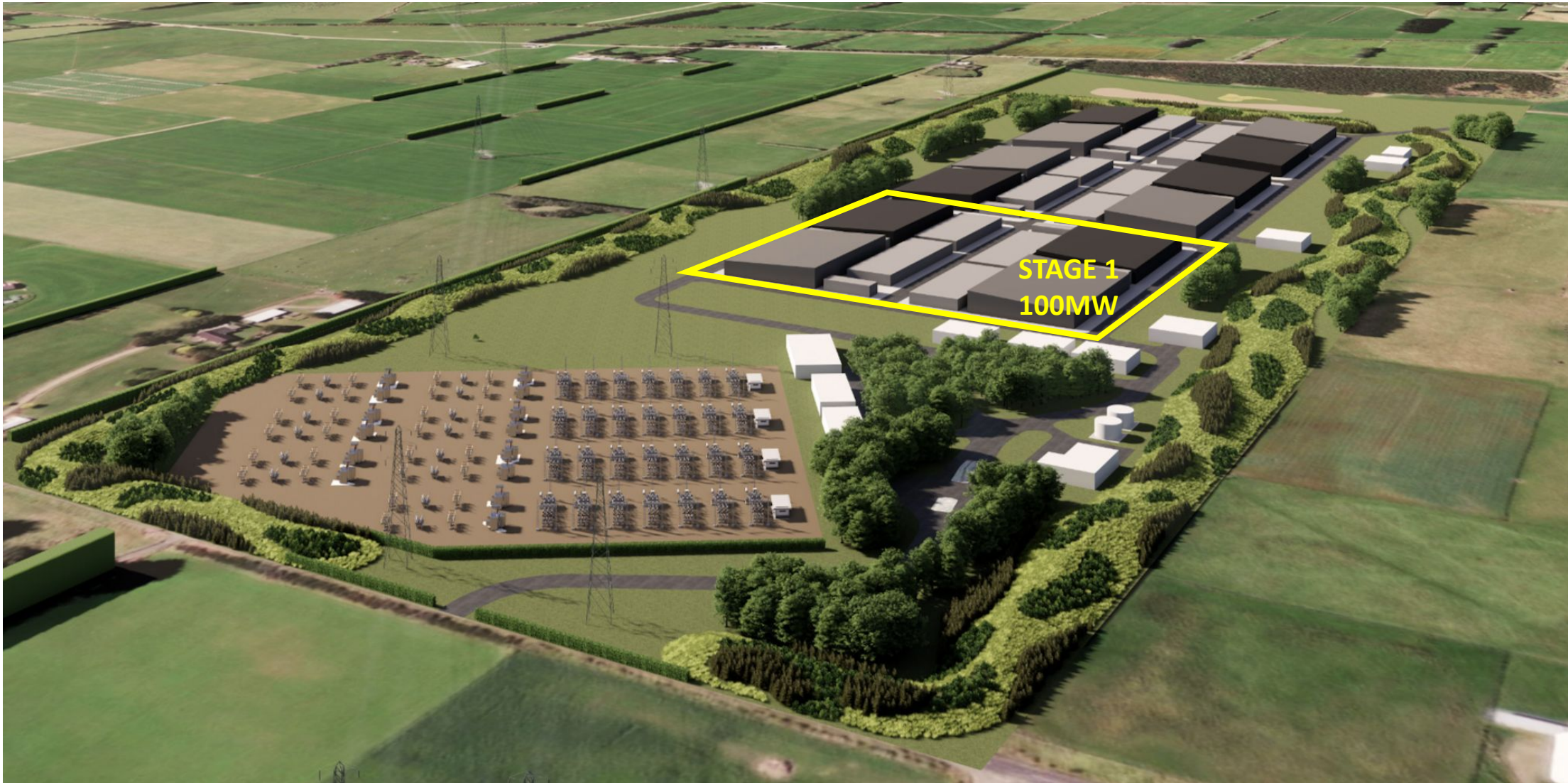


New Zealand’s South Island, particularly Southland, holds significant potential to host large-scale AI data centres

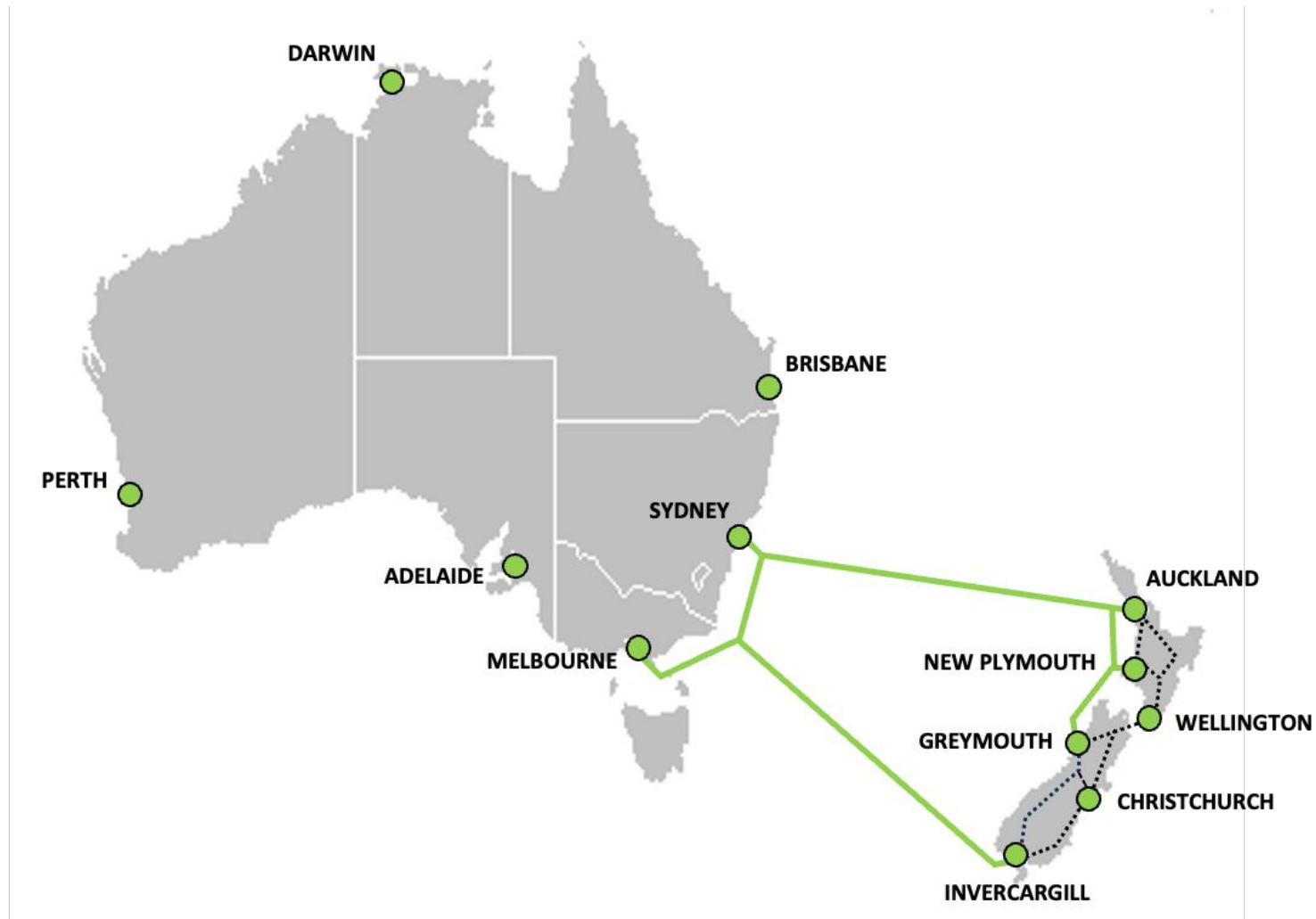
CRITERION	RATING	DETAILS
Clean Power		>90% renewable (hydro-heavy grid). Nearby Manapouri Hydro Plant (800MW) powers the region.
Cool Climate		Year-round cool air; ambient temps ideal for free cooling. No heatwaves
Water availability		Abundant fresh water from lakes and rainfall. Supports water-side economization
Geopolitical Stability		Strong regulatory environment and Five Eyes alignment. Pro-investment
Sustainability Branding		Low carbon intensity, high ESG value - strong narrative for AI sustainability



# DATAGRID AI DATA CENTER CAMPUS



# TASMAN RING – ENABLING AN AI-DRIVEN NEW ZEALAND



**TASMAN RING NETWORK**

## KEY BENEFITS

- A threefold increase in New Zealand's international bandwidth capacity
- Significant latency improvements especially for the South Island
- Critical infrastructure to position New Zealand as AI-ready
- 6,000km subsea cable including 6 landings

# BENEFITS TO NEW ZEALAND

---



## KEY BENEFITS

- **Strategic Advantage:** NZ as a key player in the global AI infrastructure landscape
- **Economic Growth:** NZ\$7 billion in economic benefits over 15 years
- **Regional Development:** Significant economic boost for Southland and economic diversification
- **Green Compute:** Leveraging NZ's renewable energy to create a Green Compute export market
- **Attracting global tech:** Southland as an APAC hub for AI training, research and international technology companies





# ENERGY CHALLENGES AND SOLUTIONS



## CHALLENGES

- Power availability
- Baseload power
- Grid stability

## SOLUTIONS

- Long-term PPAs to enable renewable development
- BESS
- On-site generation and microgrids
- Grid upgrades and demand response solutions

