

# Tauhara North No.2 Trust

## Annual Presentation to NZGW

Presented by:- Kevin McLoughlin  
CEO – Ringa Matau Limited

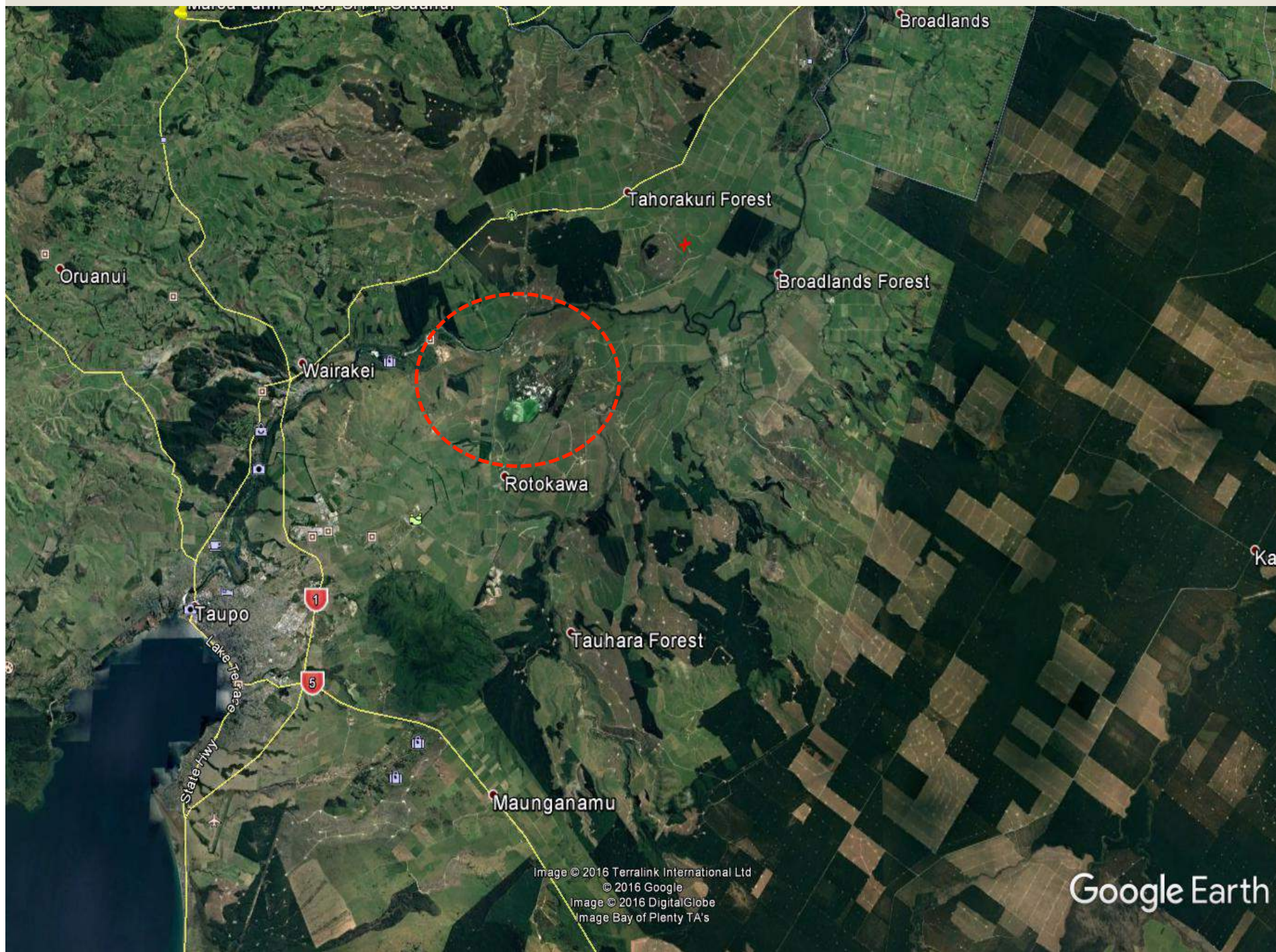
25<sup>th</sup> November 2016

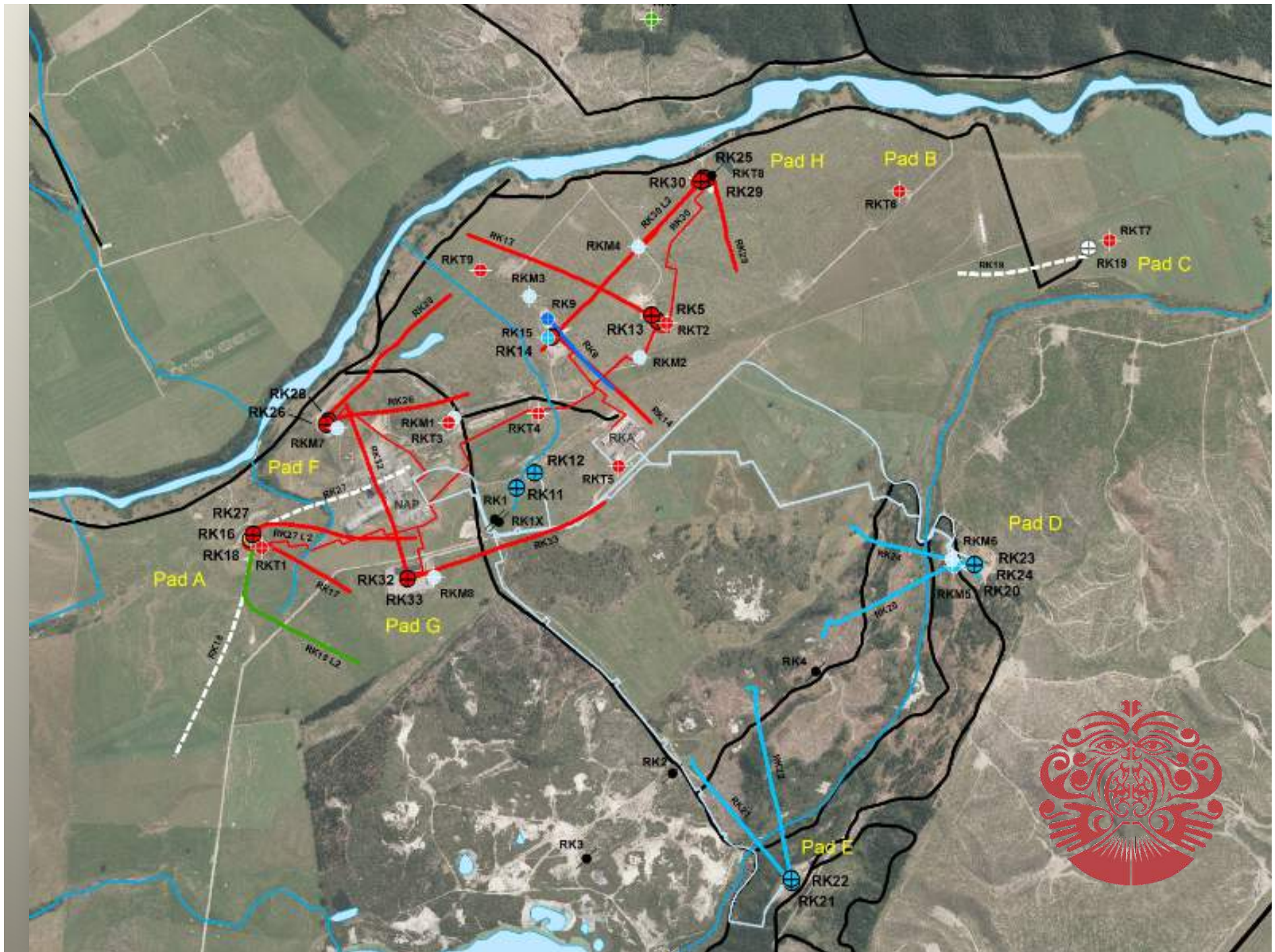


# Who / What is Tauhara North No 2 Trust?

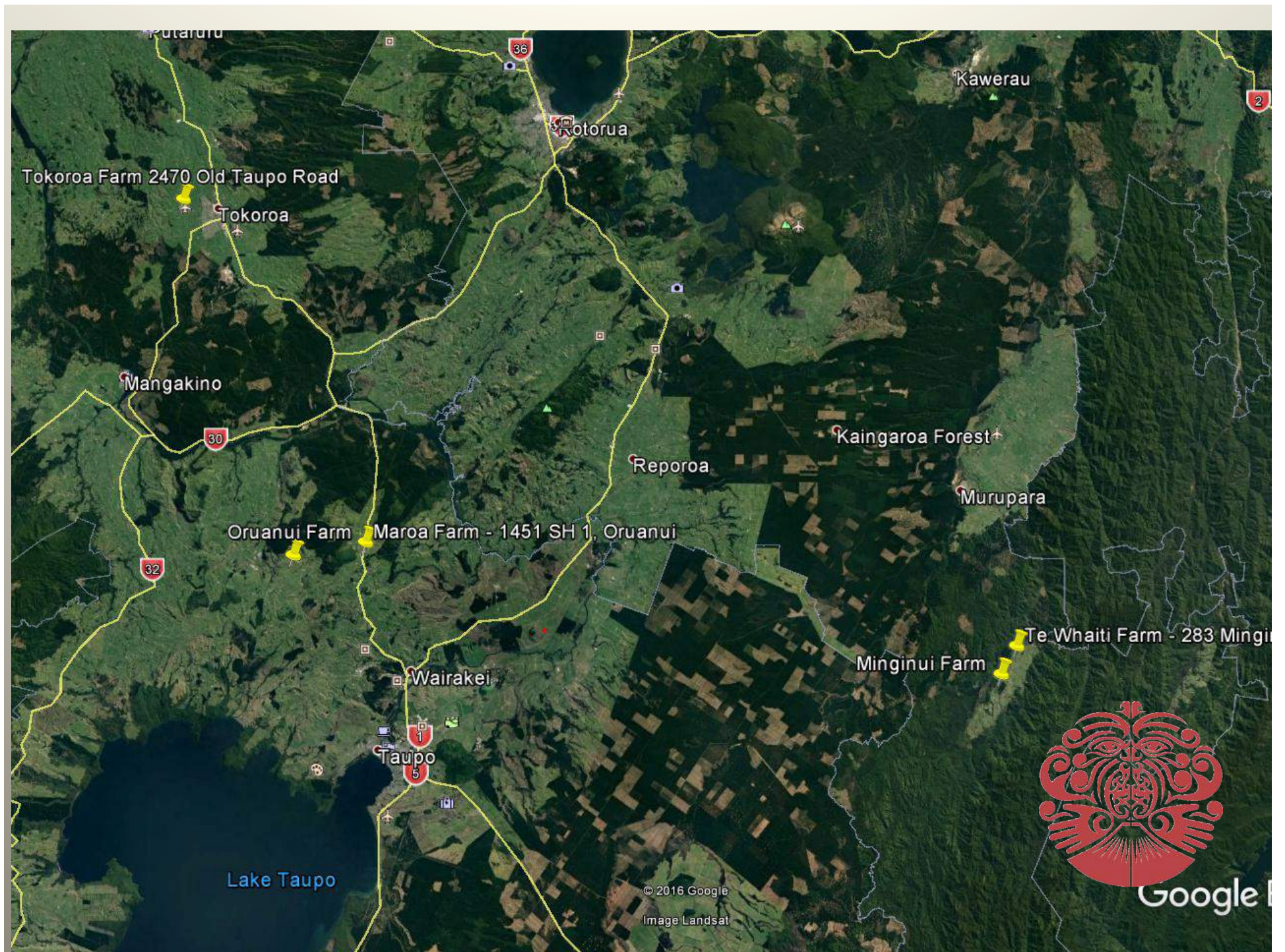
- TN2T is an Ahu Whenua Maori Lands Trust with over 900 known shareholders & over 6000 total owners & their descendants. Ngati Tahu / Ngati Whaoa descent.
- Grown from an entity with assets totalling approx. \$28m in 2007 to in excess of \$350m today.
- Major assets – Land at Rotokawa
  - Investment in Rotokawa Steamfield
  - Nga Awa Purua Power Station
  - 5 Dairy Farms
  - Cash Investments

















# Direct-Use Steam Projects

We have access to steam from wells that are not suitable for commercial production – which can be made available for small to large projects.

Well temperatures of up to 220 degrees C.

Come & talk to us !!



# Transmission Pricing Methodology Review

In the original proposal TN2T share of the increased costs was \$4.6million.

The latest revision sees this figure reduced to less than \$150k.



# Mercury NZ

- Acknowledgement of Paul Ware who has now left Mercury to pursue other interests.
- Absolute gentleman & a pleasure to work with.
- Excellent example of how a corporate can work with indigenous people to achieve amazing outcomes.



# Farming

- Since 2012 - 5 Farms worth more than \$50m
- Milking 3000 cows
- Producing close to 1 million Kgms



Thank you.

